



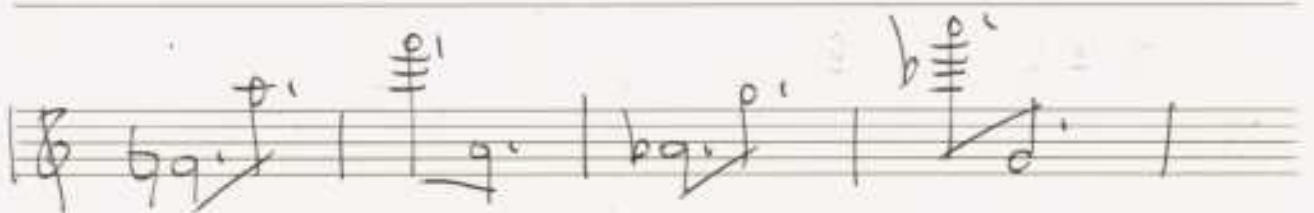
(Das
Tägliches Brot für
einen verirrten
Flötisten)

14 Studien 1972

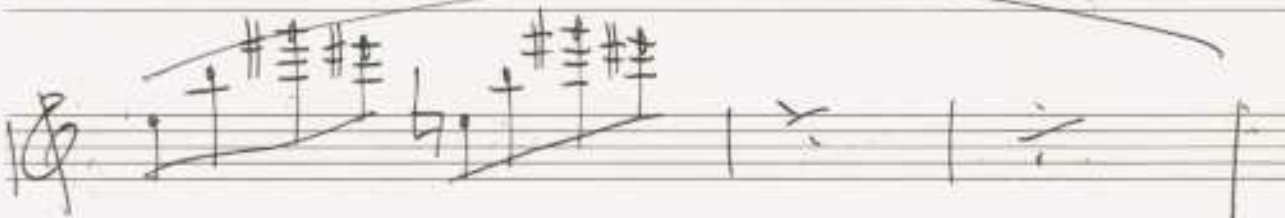
Adolf Scherbaum

1

alle = (Stacc.) (legato) (Presto - Fento u.S. W.)
Stücke

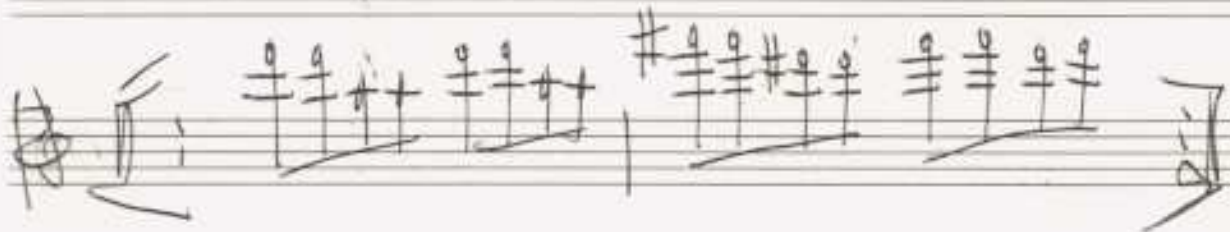
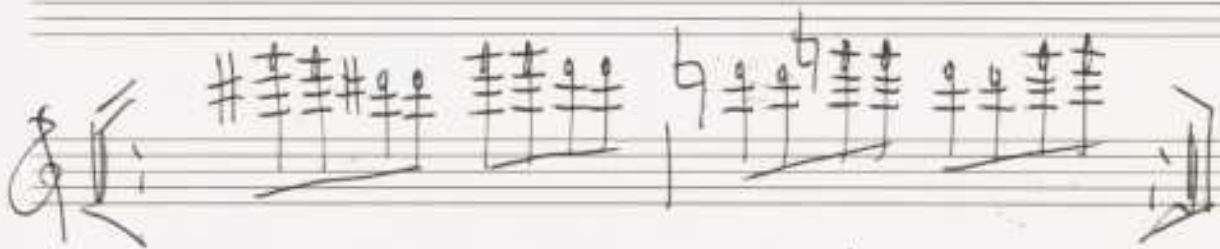


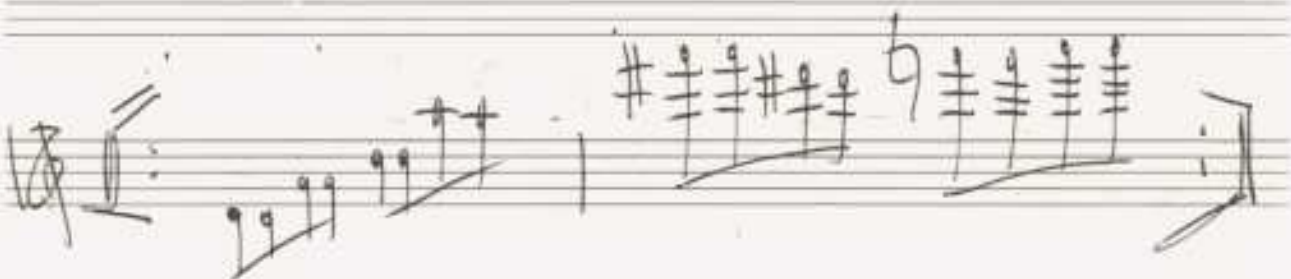
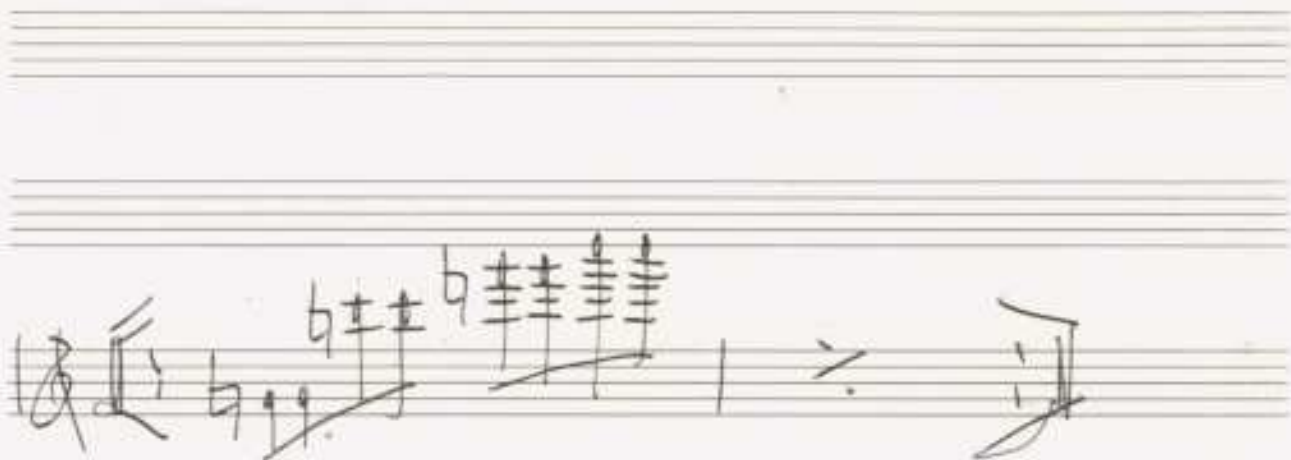
2



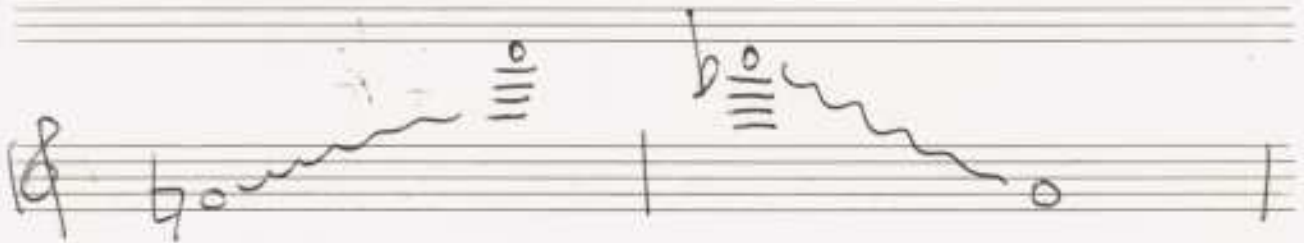
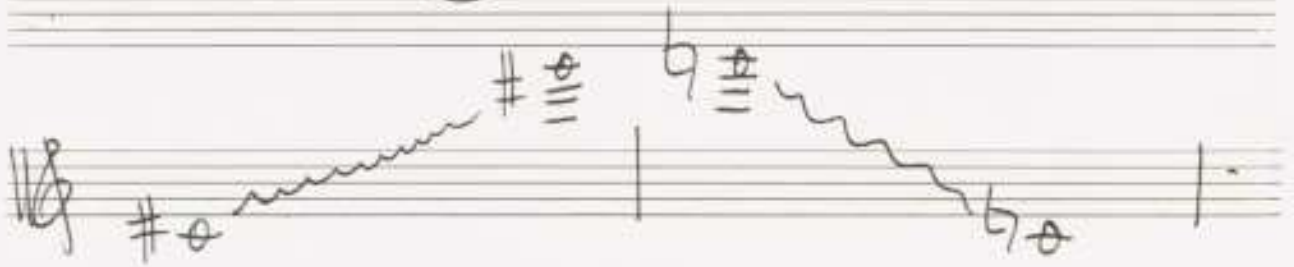
3

9





5



Handwritten musical notation on a single staff in treble clef. It features a melodic line starting with a flat sign and a whole note, followed by a wavy line, a bar line, another wavy line, and a final whole note with a flat sign. To the right, the word "FINE" is written above a double bar line with a flourish.

Handwritten musical notation on a single staff in treble clef. It shows a sequence of notes with slurs and wavy lines, including a flat sign and a sharp sign. The notation is somewhat abstract and expressive.

Handwritten musical notation on a single staff in treble clef. It continues the sequence of notes with slurs and wavy lines, featuring a sharp sign and a flat sign.

Handwritten musical notation on a single staff in treble clef. It shows a sequence of notes with slurs and wavy lines, including a sharp sign and a flat sign.

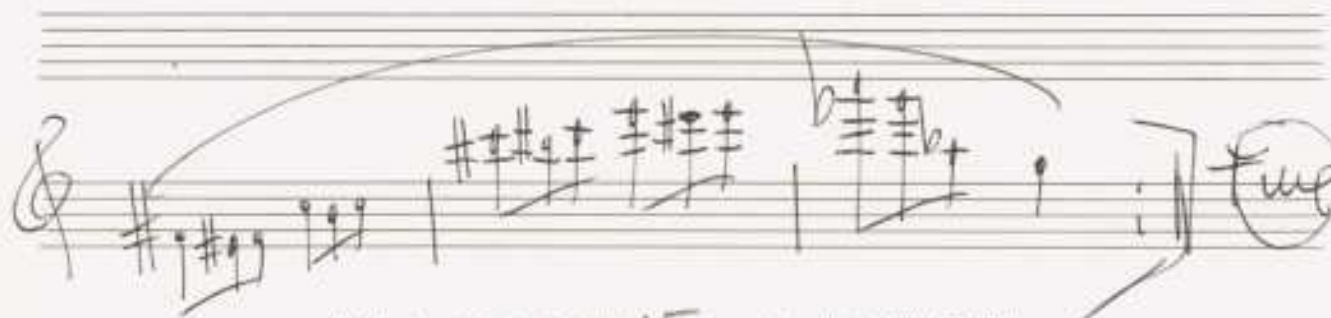
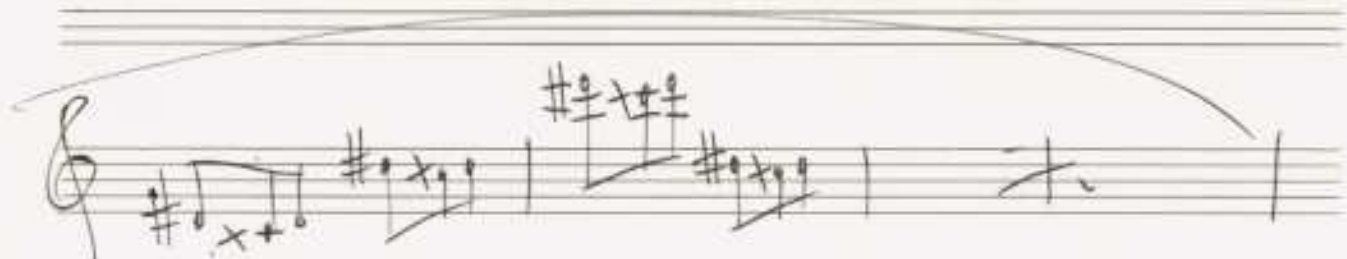
Handwritten musical notation on a single staff in treble clef. It shows a sequence of notes with slurs and wavy lines, including a sharp sign and a flat sign, ending with a double bar line and a flourish.

D.C.
or Fine

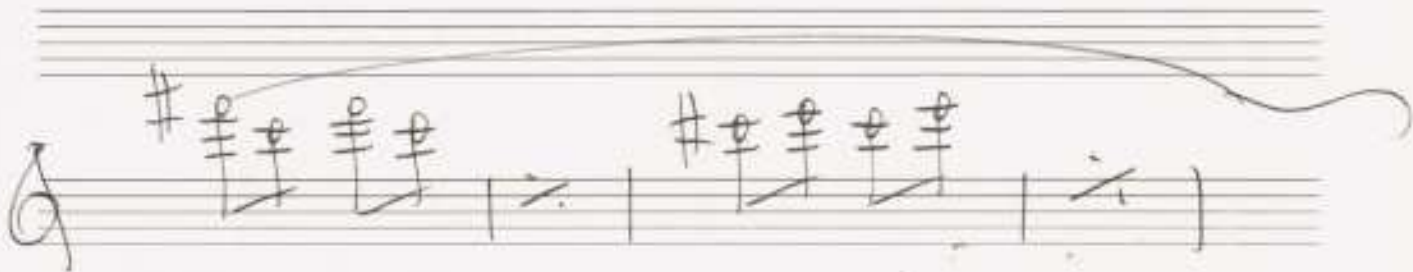
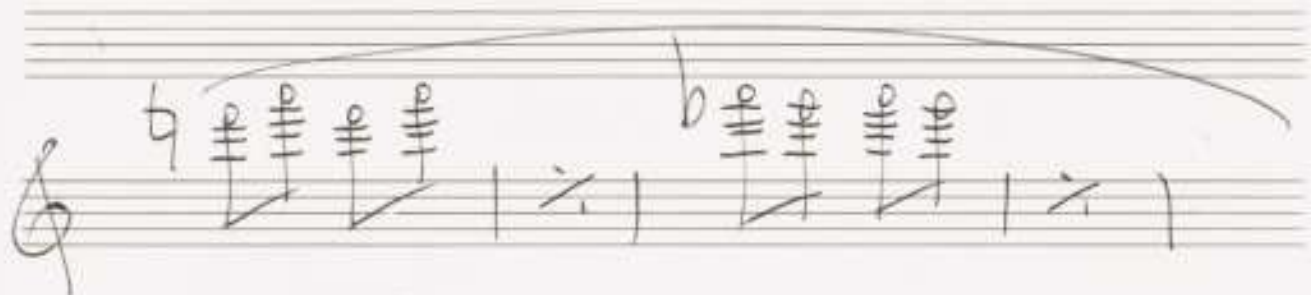
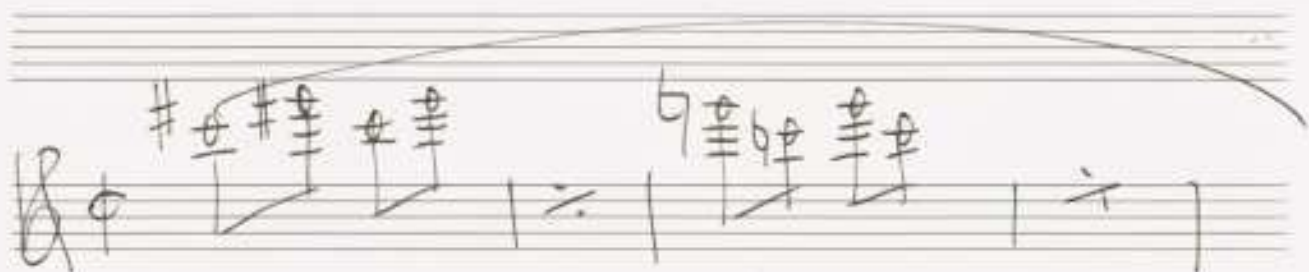
6



7



①



FINE

2. x p.c.c.
al Fine

2





3





4

CIS DUR

E DUR

G DUR

C DUR

D DUR

Handwritten musical notation on a single staff in treble clef. It shows a whole note chord starting on middle C (C4) and ascending to a whole note chord on G4. The label **F# DUR** is written above the staff. The final chord is represented by a treble clef, a whole note, and five ledger lines above the staff.

Handwritten musical notation on a single staff in treble clef. It shows two whole note chords. The first starts on C#4 and ascends to F#5, labeled **FIS DUR**. The second starts on C#4 and ascends to G#5, labeled **H DUR**. Both chords are represented by a treble clef, a whole note, and three ledger lines above the staff.

Handwritten musical notation on a single staff in treble clef. It shows two whole note chords. The first starts on B3 and ascends to Bb4, labeled **F DUR**. The second starts on C4 and ascends to C#5, labeled **F# DUR**. Both chords are represented by a treble clef, a whole note, and three ledger lines above the staff.

Handwritten musical notation on a single staff in treble clef. It shows three whole note chords. The first starts on Bb3 and ascends to Bb4, labeled **As DUR**. The second starts on C4 and ascends to C#5, labeled **G DUR**. The third starts on C#4 and ascends to F#5, labeled **FIS DUR**. All chords are represented by a treble clef, a whole note, and three ledger lines above the staff.

Handwritten musical notation on a single staff in treble clef. It shows five whole note chords. The first starts on C4 and ascends to C#5, labeled **C DUR**. The second starts on C#4 and ascends to D#5, labeled **CIS DUR**. The third starts on D4 and ascends to D#5, labeled **E DUR**. The fourth starts on Bb3 and ascends to Bb4, labeled **As DUR**. The fifth starts on C4 and ascends to C#5, labeled **G DUR**. All chords are represented by a treble clef, a whole note, and three ledger lines above the staff.

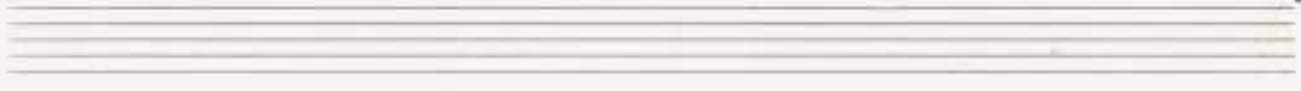
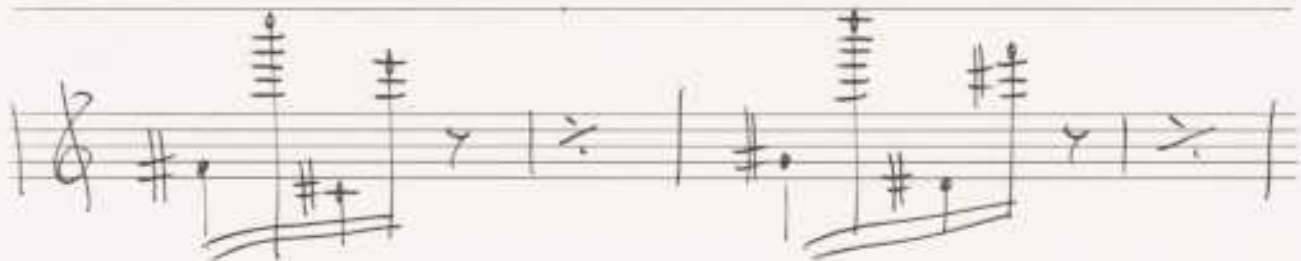
5

Handwritten musical notation in bass clef, 3/8 time signature. It shows two measures of music with chords and notes. The first measure has a sharp sign, a plus sign, and a chord with a sharp sign and a flat sign. The second measure has a chord with a sharp sign and a plus sign, and a note with a sharp sign.

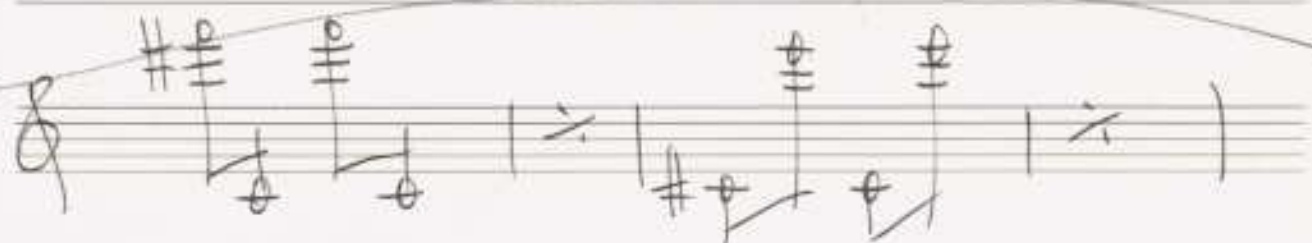
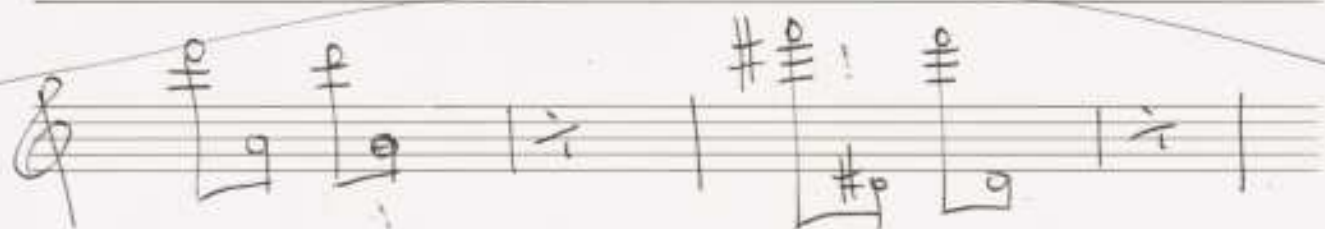
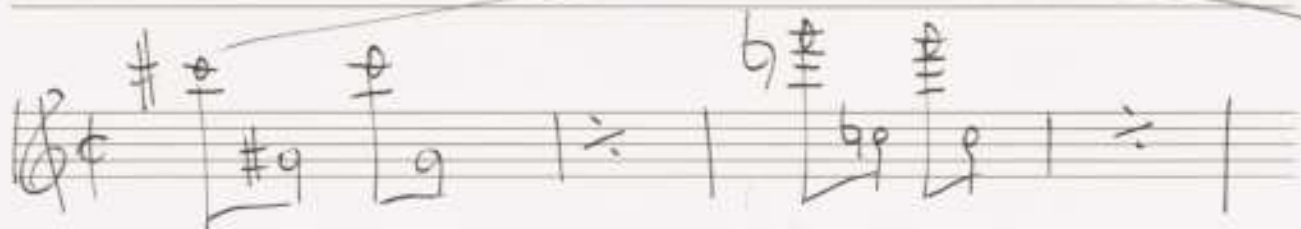
Handwritten musical notation in treble clef. It shows three measures of music with chords and notes. The first measure has a flat sign and a chord with a sharp sign. The second measure has a sharp sign and a chord with a sharp sign and a plus sign. The third measure has a flat sign and a chord with a sharp sign.

Handwritten musical notation in bass clef. It shows two measures of music with chords and notes. The first measure has a sharp sign and a chord with a sharp sign and a flat sign. The second measure has a sharp sign and a chord with a sharp sign and a flat sign.

Handwritten musical notation in treble clef. It shows two measures of music with chords and notes. The first measure has a chord with a sharp sign and a plus sign. The second measure has a chord with a sharp sign and a plus sign.



6



Faire

2. x
D.C.
al
Faire



Fine



2. + p. G.
od
Fue

1972

Adolf Schreier